

Strain Gages for Transducers

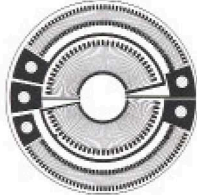
SOLTEC®

Strain gages are used not only for stress measurement but also as sensing elements for various transducers owing to their excellent repeatability and linearity. Needless to say, they are applied to a variety of KYOWA strain-gage transducers, leading to the high reliability on our products.

To cope with users' needs for making their original transducers, we manufacture various strain gages for load, pressure and torque transducers. Shown below are typical examples of strain gages for transducers. For details, contact KYOWA or our sales representative.

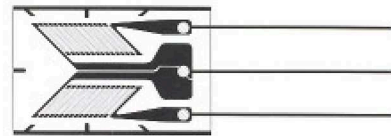
Diaphragm Type

Major Applicable Transducers
Pressure Transducer



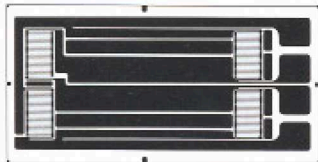
Biaxial Shearing Type

Major Applicable Transducers
Torque Transducer



Full-bridge Type

Major Applicable Transducers
Load Cell, Displacement Transducer



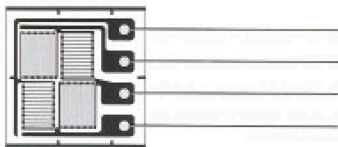
Uniaxial 2-element Half-bridge Type

Major Applicable Transducers
Load Cell, Pressure Transducer



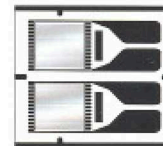
Full-bridge Type

Major Applicable Transducers
Load Cell



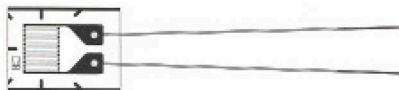
Uniaxial 2-tandem Type

Major Applicable Transducers
Load Cell, Displacement Transducer



Uniaxial Type

Major Applicable Transducers
Load Cell, Pressure Transducer,
Displacement Transducer, Acceleration Transducer



Biaxial Half-bridge Type

Major Applicable Transducers
Load Cell, Pressure Transducer

