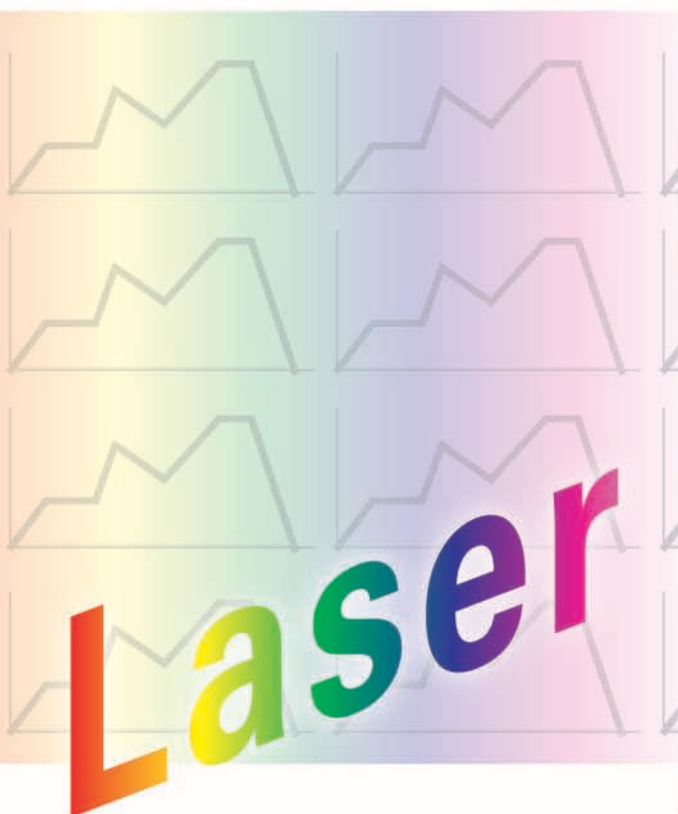
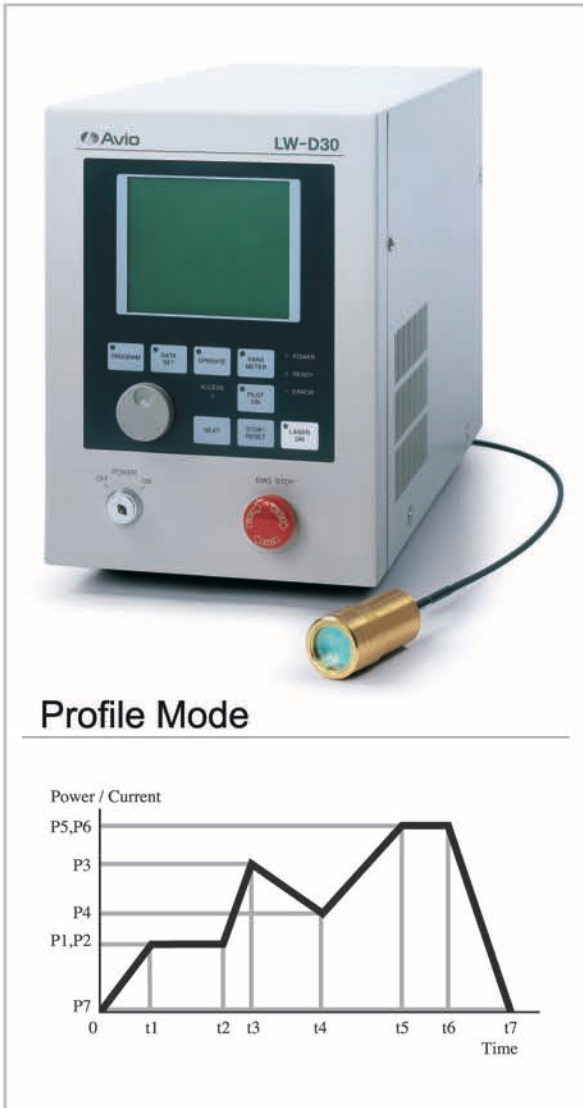


Laser Power Supply for Soldering & Plastic Joining

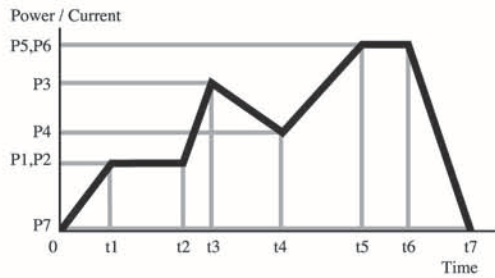


- Pb Free
- Finite Area Heating Reduces Thermal Damage
- Welds Unique Shapes
- Easy Maintenance, Less Consumables

LW-D30 Laser Power Supply



Profile Mode



Advantages

Three (3) Output Modes

- CW, Pulse, Profile Waveform
- Ideal for Various Shapes and Material

View Output Profile and Settings on LCD

- Displays Trace of Waveform
- Allows Easy Set-up

Easy Operation

- Built-in Visible Light Guide to Follow Laser Output
- Flexible Core Diameter

Compact and Feature Packed

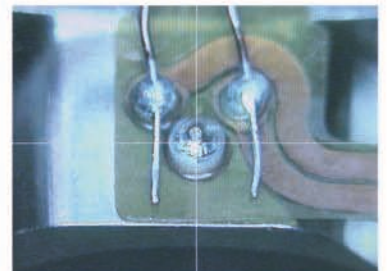
- Designed for Automation
- Wide Variety of Communication Interfaces

Accessory

Coaxial CCD Camera Unit L101

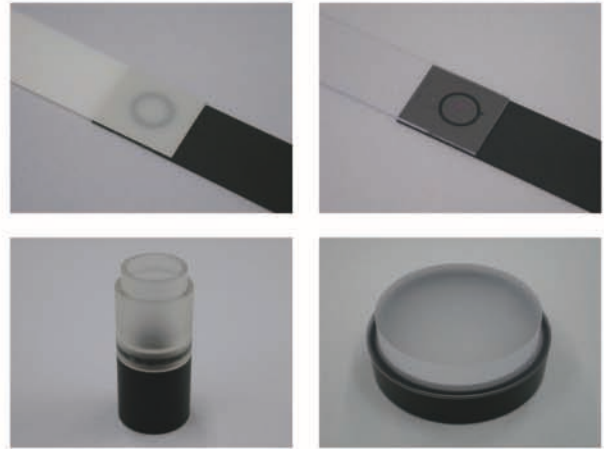
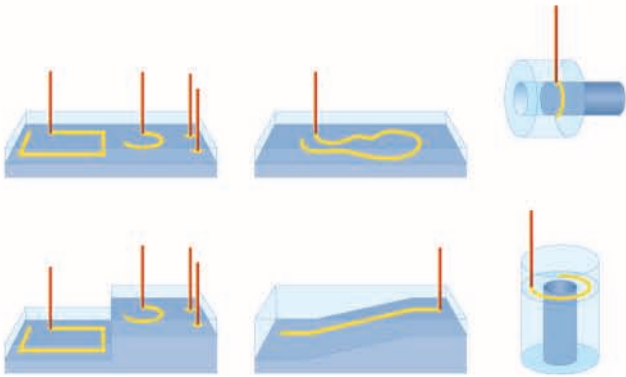


A coaxial CCD camera is positioned to monitor the work piece from the same angle as the Laser beam to allow accurate set-up and observation of Laser performance.

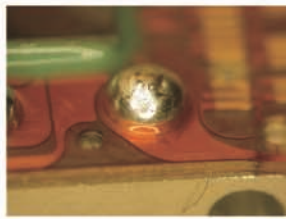
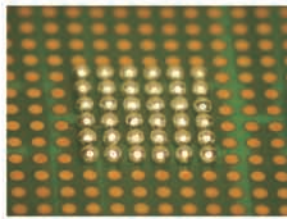


Examples of Joining

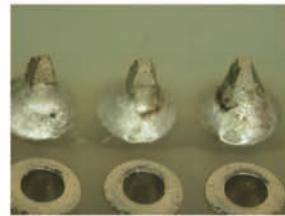
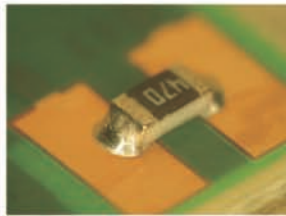
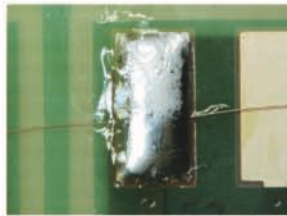
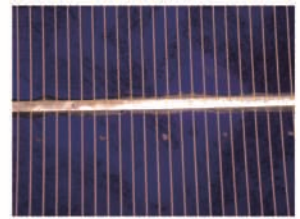
Examples of Plastic Joining



Examples of Soldering



FPC ▲



DIP ▲



HDD ▲

Solder Feeder Unit

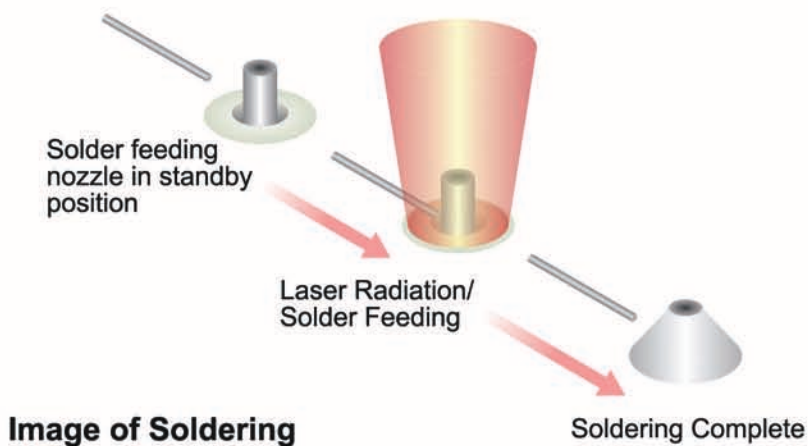
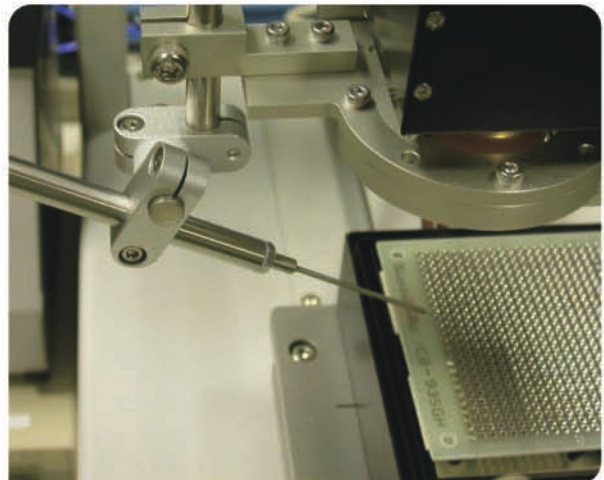


Image of Soldering



Laser System for Soldering & Plastic Joining

Specifications

Items		Laser Power Supply LW-D30
Laser Maximum Output		26W (Class 4)
Center Wavelength		980nm (Option: 808nm)
Core Diameter		800 μ m (Option: 400 μ m)
Guide Light	Output	1mW or less
	Wavelength	635nm (Class 1)
LD Cooling System		Air Cool (Peltier Control)
Output Type		CW Output
		Pulse Output
		Profile Waveform Output (Max. 265 Point Setting)
External Control		Analog Voltage Control
Output Setting Range	Power	0.0 ~ 26.0W (0.1W step)
	Current	3.0 ~ 56.4A (0.1A step)
Time Setting Range		0.000 ~ 99.999s
Display		Laser Output Value, LD Drive Current Value (Digital Display, Graphic Display)
Data Memory		15 Data
Interface		RS-232C, I/O
Input		AC100V \pm 10%, 50/60Hz (Option: 200V)
Dimensions		200(W) x 430(D) x 280(H) mm
Weight		19kg

Items		Laser System LW-S100
Drive Shaft	Servo Motor Drive	X, Y, Z
	Maximum Moving Speed	100mm/sec
	Maximum Moving Area	X: 200mm Y: 200mm Z: 100mm
Pressure Method		Air Drive: 20 ~ 200N
Number of Condition		16 Type
Working Distance		Approx. 80mm (from top of lens)
Dimensions		900(H) x 500(W) x 600(D) mm
Weight		Approx. 98kg
Input Power Source		AC100V \pm 10% 50/60Hz 15A
Input Air		0.7MPa



LW-S100 ▲



This unit is a laser product that is Class 4. Besides direct beam, etc., diffusion and reflection of light may be dangerous.

Distributed By:

SOLTEC®

12977 Arroyo Street
San Fernando, CA 91340-1548
Toll Free: (800) 423-2344 Ext. 411
Direct: (818) 365-0800 Ext. 411
Fax: (818) 365-7839
Sales@SoltecCorp.com
www.SoltecCorp.com

⚠ CAUTIONS & WARNINGS

To operate a unit correctly, read the operation manual carefully. The Unit should be situated away from the place filled with water, moisture, steam, dust or soot, which may cause a fire, an electric shock, troubles, etc.

The appearance and specifications are subject to change without notice.

Additional Contact: